

Academic Affairs Public Forum

11/01/22

Agenda



Committees and Reports

Promotion and Tenure

Promotion Hierarchy for Instructors

Workload

Summer School

Fac and Staff Recruitment and Retention

Research, Intellectual Property, and Indirect Cost

Faculty and Student Engagement

Faculty Development

Community Engagement

Program Reviews

Facilities

Academic Technology

Faculty Awards

Honors Program

Graduate School

Climate and Culture

Undergraduate Experience

General Education

Communications

Data Governance

Achievement Gaps

Academic Structure

Academic Calendar

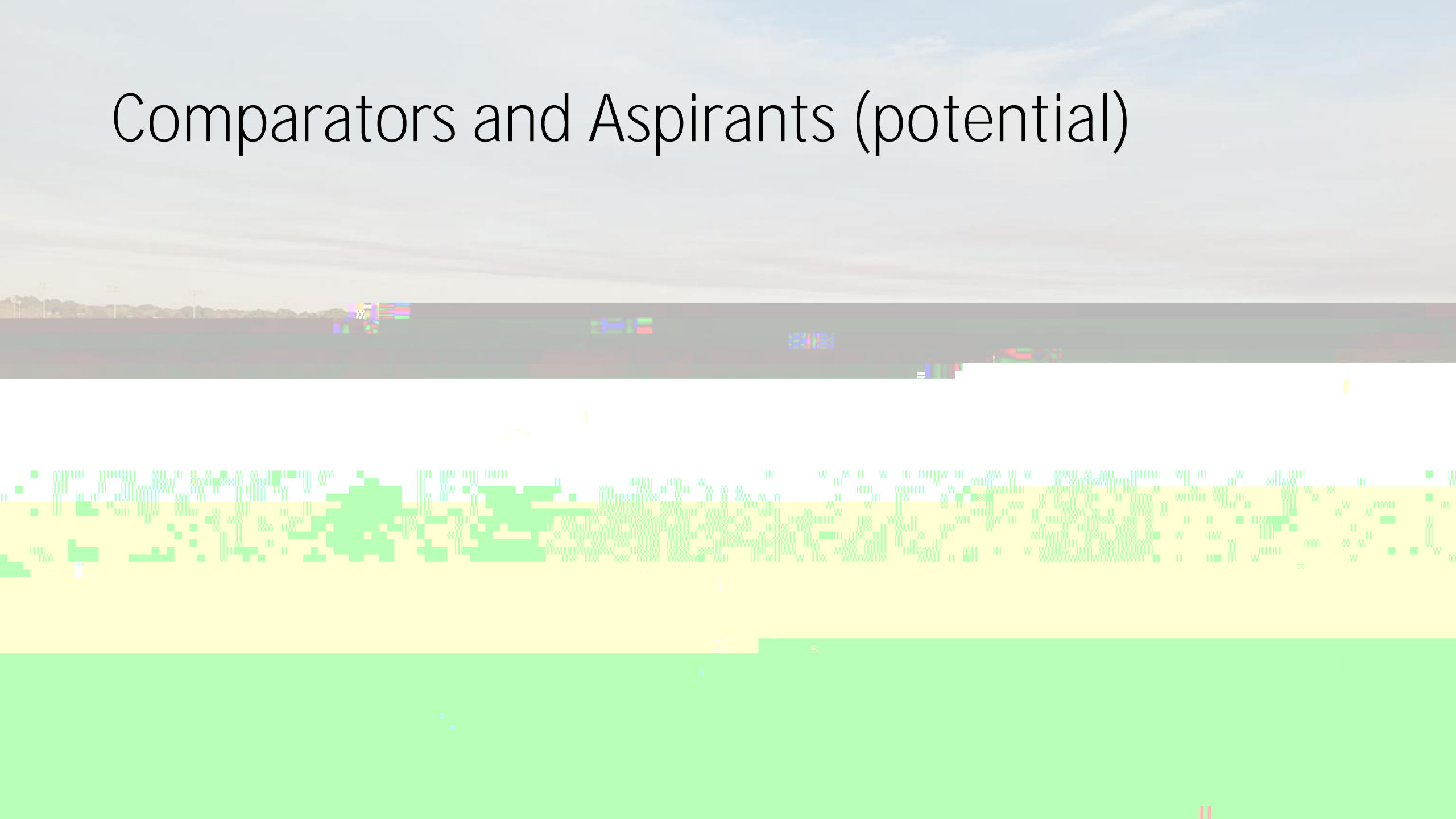
Faculty and Staff Center

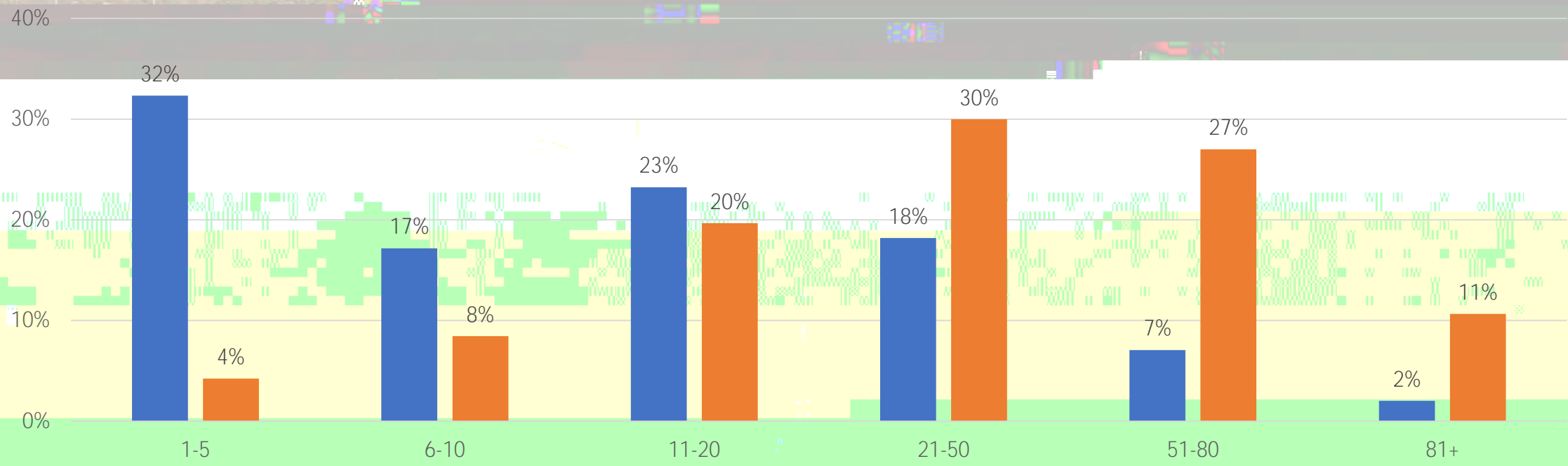
Teaching and Learning Modalities

Commencement Committee

Portfolio Review

Comparators and Aspirants (potential)

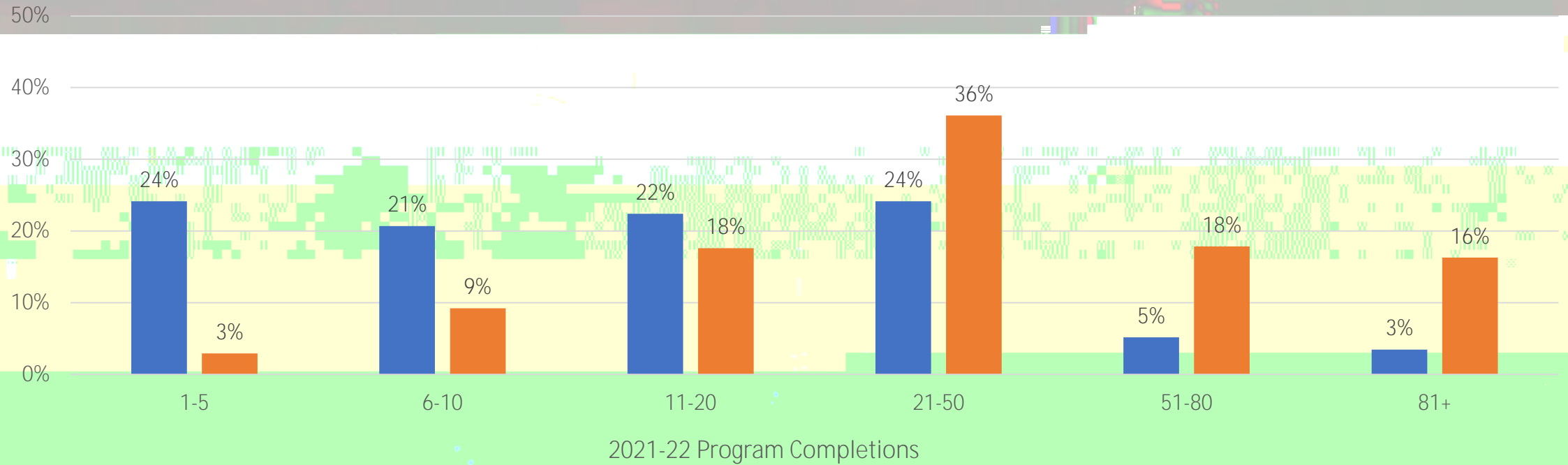




2021-22 Program Completions

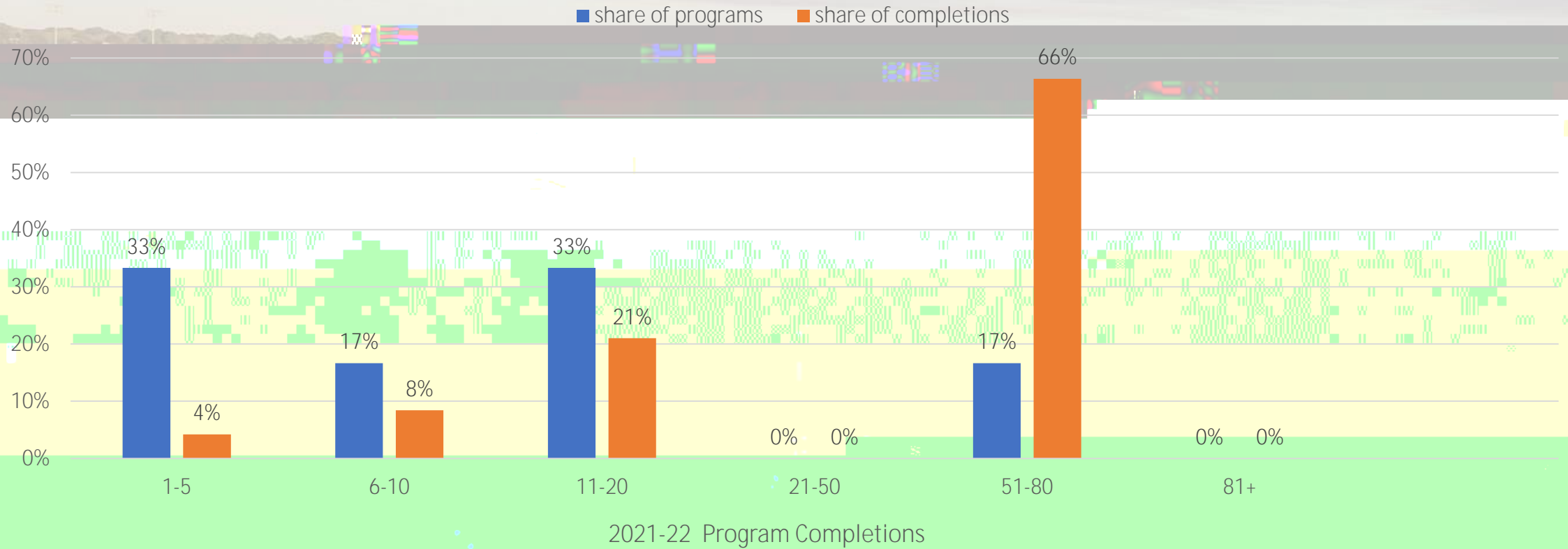
University of Louisiana Monroe's Program Distribution Undergraduate 2021-22 Completions (Certificate, Associate, Bachelor's)

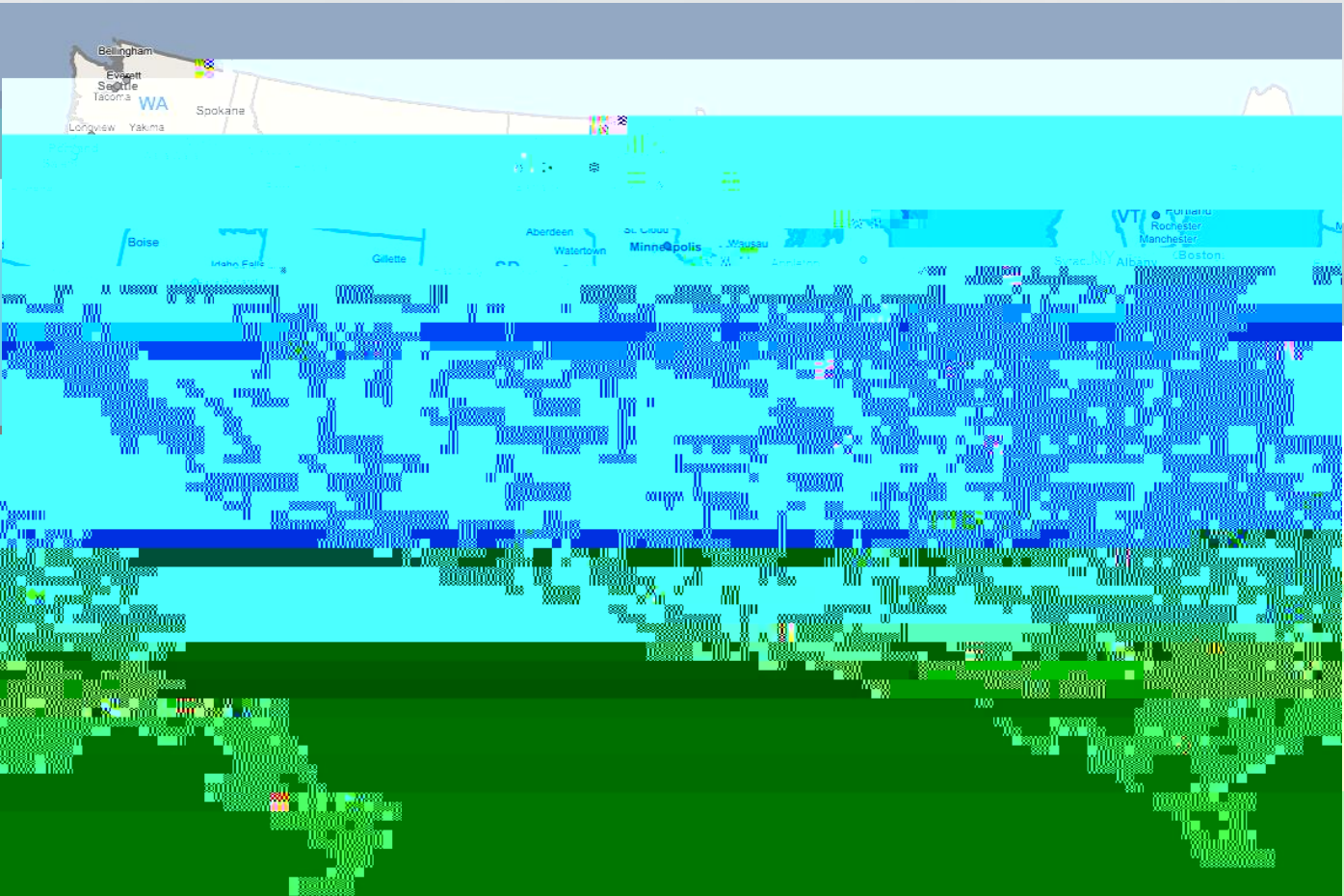
■ Share of Programs ■ Share of Completions





University of Louisiana Monroe's Program Distribution Doctor's 2021-22 Completions



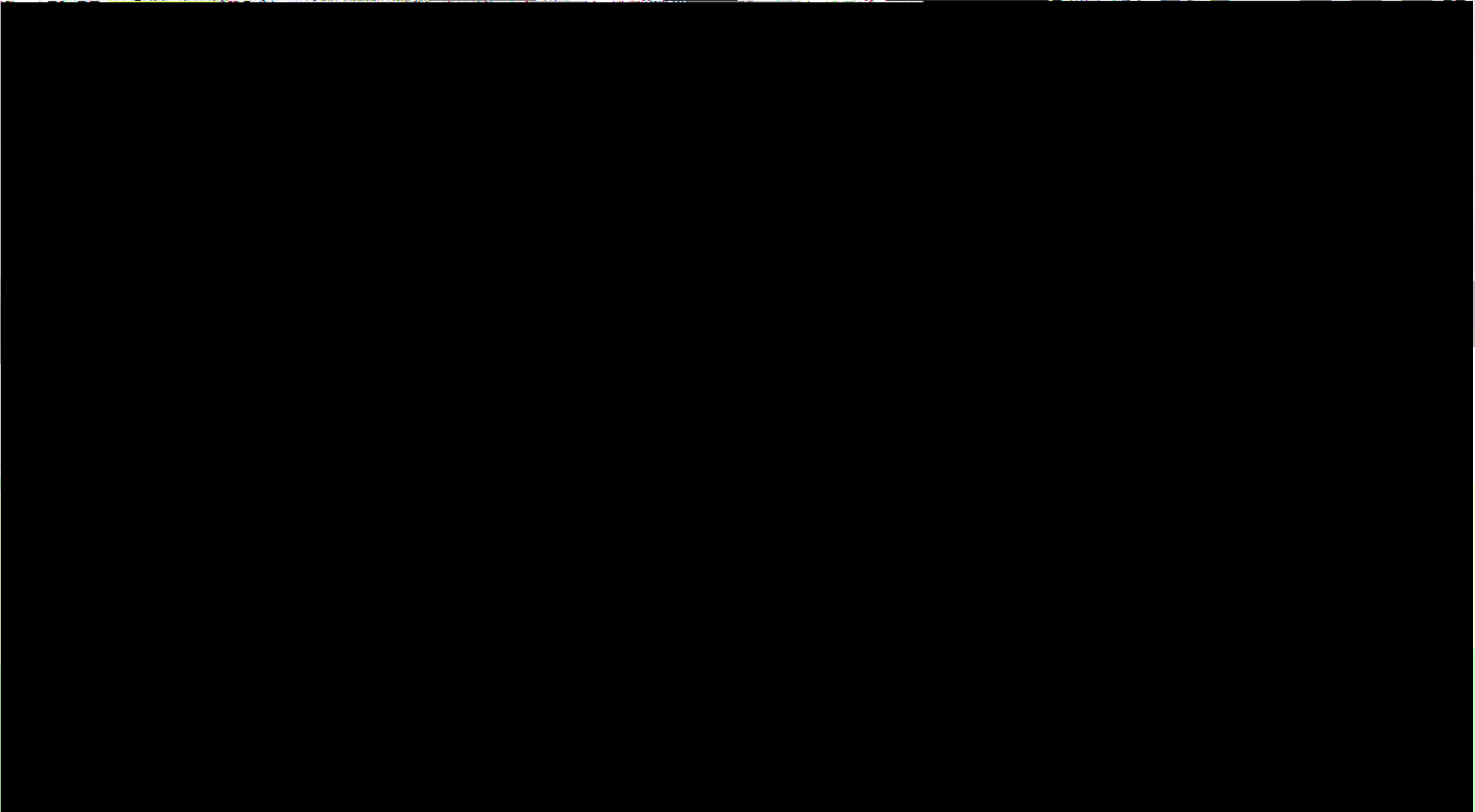


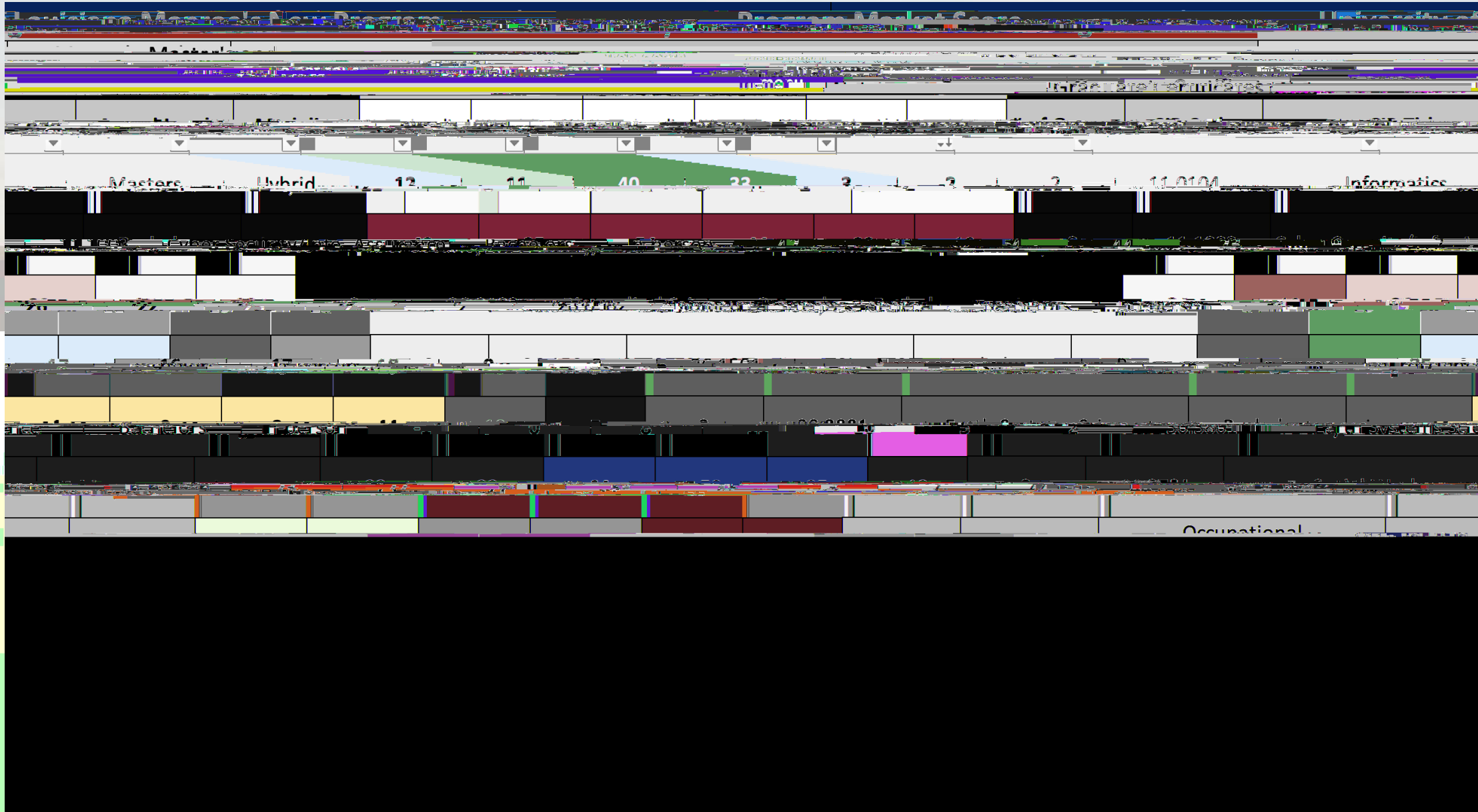
Overlays











New program implementation

Faculty driven

Suggestions will be given to the faculty for consideration

New pursuits

- Feasibility Study

- Prioritization

- Substantive change (SASCOC)

- Modify academic plan (ULS)

- Go through academic approval processes

Feasibility study (Ex. Enrollment and Income)

Program Name	Experimental				
Program CIP Code	88.8888				
Level	Undergraduate				
First Semester of Implementation	Fall 2025				
	Year 1	Year 2	Year 3	Year 4	Year 5
	Amount	Amount	Amount	Amount	Amount
Enrollment (FTE's)					
New FTE's	10	20	30	40	50
Retained FTE's (85%)	0	9	34	63	97
Total	10	29	64	103	147
Student Credit Hours Produced	240	522	1152	1854	2646
Revenue					
Discounted Tuition (25%)	\$21,703.20	\$62,939.28	\$138,900.48	\$223,542.96	\$319,037.04
University Fees	\$12,353.85	\$35,826.17	\$79,064.64	\$127,244.66	\$181,601.60
Program Fees	\$0	\$0	\$0	\$0	\$0
Additional Revenue	\$0	\$0	\$0	\$0	\$0
Total	\$34,057.05	\$98,765.45	\$217,965.12	\$350,787.62	\$500,638.64

Feasibility Study (Ex. Expenses and Personnel)

Expenses					
Salaries	\$140,000	\$140,000	\$180,000	\$230,000	\$230,000
Benefits (37.5%)	\$52,500	\$52,500	\$67,500	\$86,250	\$86,250
University Overhead (51%)	\$98,175	\$98,175	\$126,225	\$161,288	\$161,288
Investment Margin	\$0	\$0	\$0	\$0	\$0
Additional Expenses	\$0	\$0	\$0	\$0	\$0
Total	\$290,675	\$290,675	\$373,725	\$477,538	\$477,538
New Faculty and Staff Needed (Count)					
Administrative	1	0	0	0	0
Part-time	0	0	2	0	0
Full-time	1	0	0	1	0
Administrative support	0	0	1	0	0
Net Revenue	-\$256,617.95	-\$191,909.56	-\$155,759.88	-\$126,749.89	\$23,101.14

ULS Competencies

Communication Competence

Critical and Creative Problem Solving

Adaptable Resilience

Cultural Competence

Self-Reflective Awareness

Implementation

Meeting November 15th

Graduate competencies, not learning outcomes

Louisiana Board of Regents: Pathway to 2030



Louisiana Board of Regents: Pathway to 2030

